

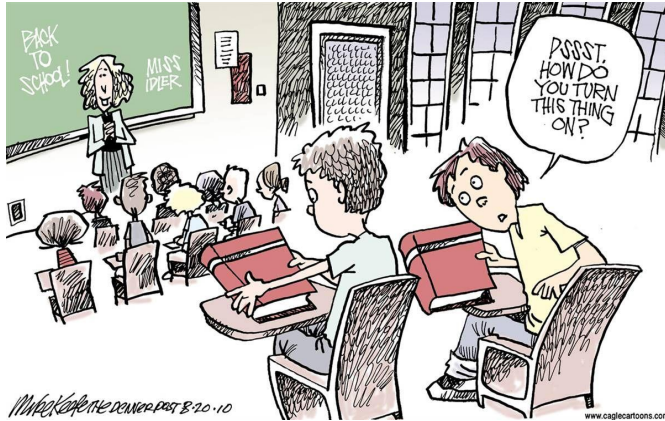


Acalanes Education Association

Welcome Back Newsletter



www.acalanesteachers.org



NEW AND RETURNING REPS!

Let your site representatives know that you appreciate them serving on behalf of you and your colleagues!

Executive Board Members

- President: Lori Tewksbury(AHS)
- Vice President: Ken Lorge (AHS)
- Secretary- Treasurer- Justin Seligman (CHS)
- At- Large Member- Petro Petreas (CHS)
- Communications and Membership Engagement: Sara Feinberg (LLHS/ACIS)

ARE YOU A NEW MEMBER!?

We are so glad to have you and we would love to interdistrict mail you a really cool red AEA shirt! Please complete Google Form through QR code and we will make sure you get a shirt! ----->



Acalanes Reps

- Cathy Challacombe
- Joe Schottland
- Pete Stewart

Campolindo Reps

- Natalie Goepel
- Taylor Peterson
- Jenna Wrobel

Las Lomas Reps

- Ladan Amin
- Jim Morgan
- Amelia Whalen

Miramonte Reps

- Lauren Fruci
- Colleen Williams
- Susan Williams

ACIS Rep

- Maria LaHommedieu

Bargaining and Negotiations Team

IMPORTANT UPCOMING DATES

9/7	Rep Council Meeting @ AHS Room 201
9/12	HBCU College Fair @ Campolindo
9/18-9/22	Homecoming Week @ Miramonte
9/20	Governing Board Meeting @ AUHSD District Office
9/25- 9/29	Homecoming Week @ Acalanes, Campolindo & Las Lomas
10/4	Governing Board Meeting @ AUHSD District Office
10/5	Rep Council Meeting @ AHS Room 201

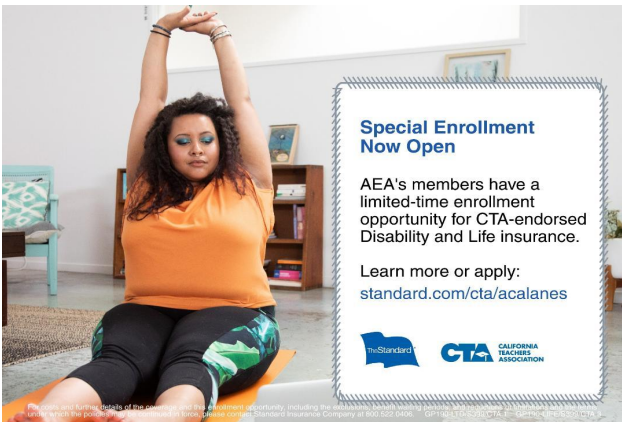
Misha Buchel (AHS)
 Kim Fisher (LLHS)
 Ken Lorge (AHS)
 Amanda Renno(MHS)
 Petro Petreas (CHS)
 Ellen Conners (MHS)

SEPTEMBER iNSURANCE HIGHLIGHT

Disability Insurance helps protect your paycheck if you are unable to work due to injury, illness(including mental health and substance abuse), pregnancy or childbirth. Some of the perks are:

- Replaces up to 75% of your daily income
- Starts paying benefits after you are out of work for 7 consecutive work days
- Covers any preexisting conditions once you are enrolled and work for 10 consecutive workdays
- Exclusive access to Student Loan and Cancer Benefits provided by CTA

Introductory Disability Insurance for Newly Hired Educators with The Standard allows you to apply without having to answer any health questions within the first 270 days of your new employment with AUHSD!



ALL Members, not just New Members, now have our AEA chapter's open enrollment period with The Standard. We have met our 10% sign-up so now anyone who enrolls by or before September 30th DOES NOT have to answer any health questions.

CHECK YOUR SICK LEAVE BALANCE & PAY/TAX INFORMATION

1. Go to the District Homepage:
www.acalanes.k12.ca.us
2. Click on STAFF
3. Employee Self Service (ESS)
4. Log in to MunisSelfService
 - Username: First initial Last name Last 4 of Social Security Number
 - Temporary Password: Last 4 of your Social Security Number
 - Password: (You will create upon first log- in)

Forgot your password? No worries, Click "Forgot Password" or call x6616 to reach the AUHSD Benefits Department.

WHAT DO EACH OF THE CODES ON MY PAYCHECK MEAN?

1st Column

BSE CE 11S- Base Pay 11 Months
 SCHB11 S- Stipend (if applicable)
 BS HRLY S- Hourly Base Pay (if applicable, paid on 10th)
 HR CE SUPS- Hourly Supplemental (if applicable)
 BS DLY SUP- Daily Supplemental (if applicable)
 MA or DR 11 S - Masters or Doctoral Degree 11 Month

2nd Column

MEDICARE CE- Medicare
 FLX MED CE- Flex Spending (if applicable)
 FLE DEP CE- Flex Spending Dependent Care (if applicable)
 DENT CE PRE- Dental
 VIS CE PRE- Vision
 FIR- Federal Income Tax
 SIT- State Income Tax
 STRS CE- State Retirement
 NEW STRS- if applicable, for new teachers
 SUI CE- State Unemployment Insurance
 WC CE - Workers Comp
 CTA .6 + - California Teacher Assoc. Union Dues
 AEA .6 + - Acalanes Education Assoc.- Union Dues
 OPEB CERT - District pays this